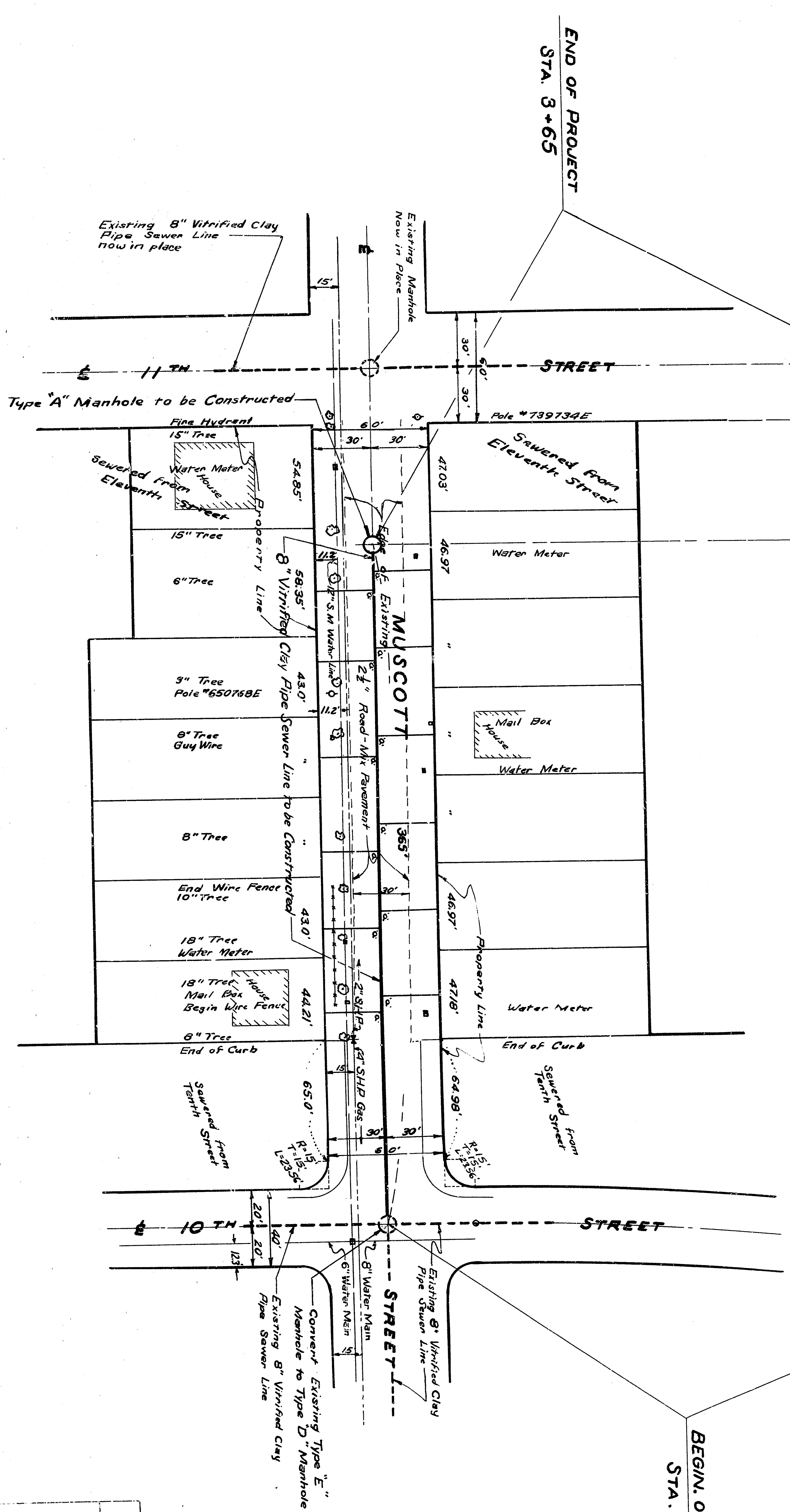
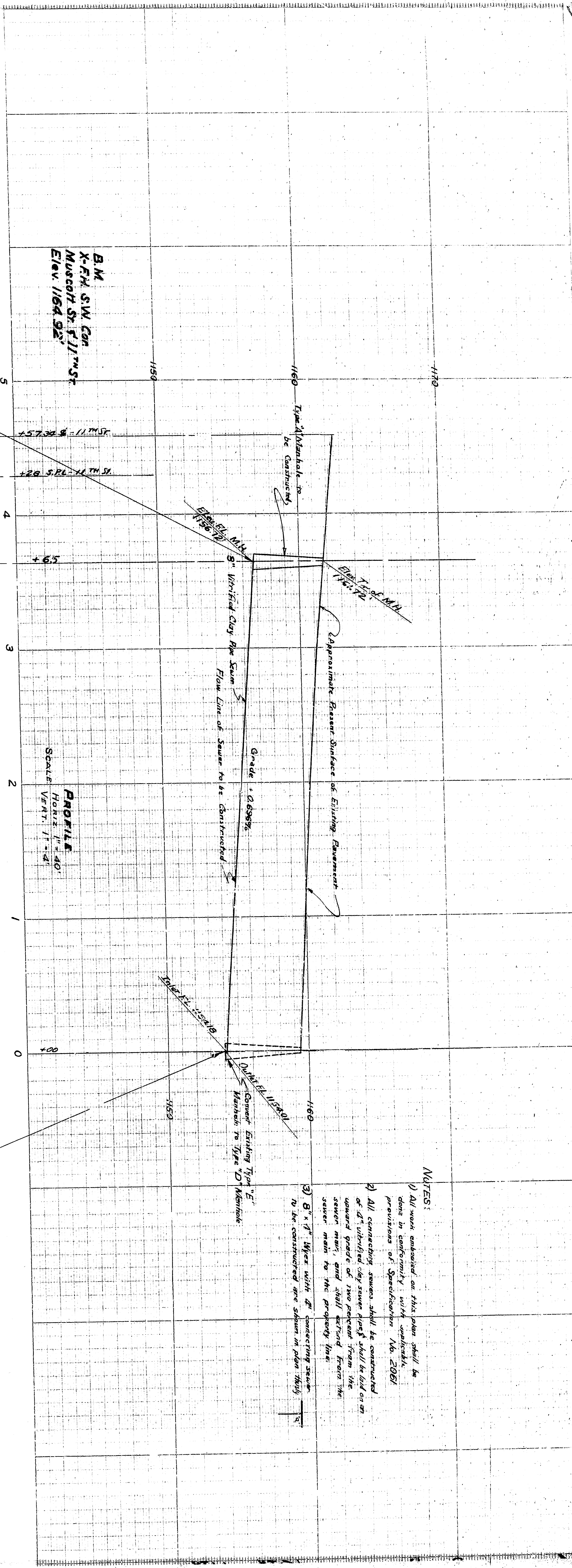


- NOTES:
- 1) All work embraced on this plan shall be done in conformity with applicable provisions of Specifications 705, 208B.
  - 2) All connecting sewers shall be constructed at 8\"/>

PLAN  
 Scale: 1" = 40'  
 PLAN ADOPTED -----  
 DEPARTMENT OF ENGINEERING  
 CITY OF SAN BERNARDINO  
 MUSCOTT STREET  
 SEWER PLAN  
 From Tenth St. to Eleventh St.

REGISTERED CIVIL ENGINEER NO. 2095  
 CHECKED BY G.D. OF 15838  
 DRAWN BY RAW 2203  
 DATE 5/15/64  
 SUBMITTED BY 15838



- NOTES:
- 1) All work embraced on this plan shall be done in conformity with applicable provisions of Specifications 100, 200B.
  - 2) All connecting sewers shall be constructed at 8" vitrifed clay sewer pipe shall be laid on an upward grade of two percent from the sewer main and shall extend from the sewer main to the property line.
  - 3) 8" x 8" Water Main at connecting sewer to be constructed per shown in plan sheet 1.

PLAN  
Scale: 1" = 40'

PLAN ADOPTED

DEPARTMENT OF ENGINEERING  
CITY OF SAN BERNARDINO  
MUSCOTT STREET  
SEWER PLAN

From Tenth St. to Eleventh St.

SUBMITTED BY	DATE	REFERENCE
APPROVED BY	DATE	REFERENCE
CHECKED BY	DATE	REFERENCE
REGISTERED CIVIL ENGINEER NO. 2095		